

New England HOME

Celebrating Fine Design,
Architecture and Building

Summer Delights

Easy, Breezy Maine
Lake Camp Style

Cape Cod Poetry
in Cedar and Steel

Elegant Living
With a Water View

PLUS: GLOBAL INSPIRATIONS
AND HOT-WEATHER COLOR

July-August 2013

\$5.95US \$6.95CAN

08>



Display until September 16, 2013
NEHOMEMAG.COM

Perspectives

New England
designers share their
favorite resources

EDITED BY PAULA M. BODAN

MEREDITH BOHN

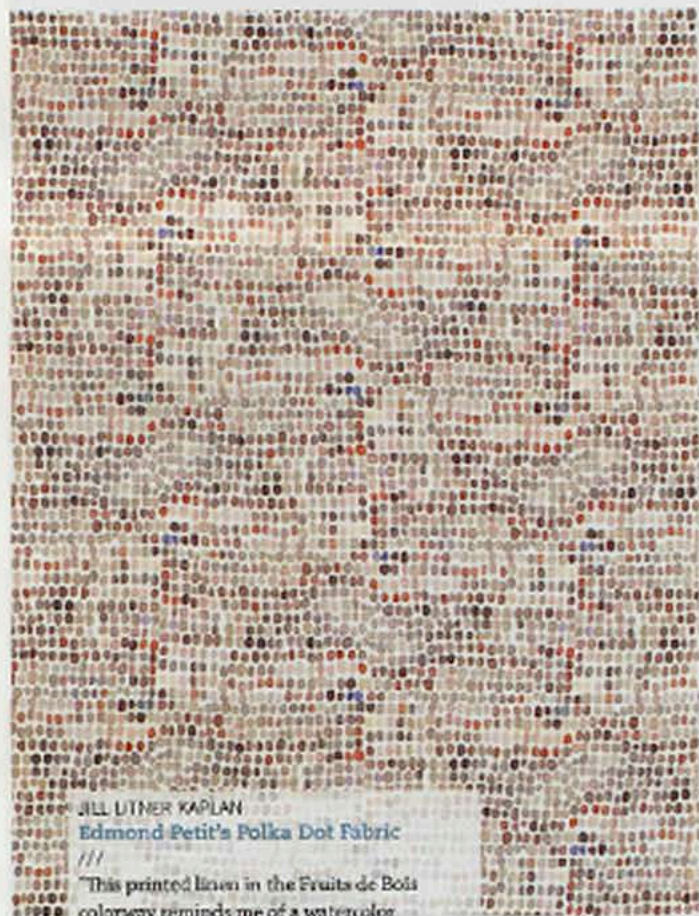
Mary McDonald's Chinois Palais Fabric

///

"The chinoiserie panels in this new collection by Mary McDonald (of Million Dollar Decorators fame) for Schumacher are simply beautiful. I love the rendition of the birds and branches and the soft pink coral of this colorway, Blush Conch. I would love to create a room around this fabric." Boston Design Center, (617) 482-9165, feschumacher.com



Colors of Summer: Seashells and Coral



JILL LYNER KAPLAN

Edmond Petit's Polka Dot Fabric

///

"This printed linen in the Fruits de Bois colorway reminds me of a watercolor painting with its soft palette of pink, salmon, raspberry and eggplant tones. It also reminds me of my own extensive collection of pink sea fan coral, shells and shells." Stark, Boston Design Center, (617) 357-5525, starkfabric.com

BESS WALKER

Glant Outdoor Canvas

///

"I love to fill an area with lots of pattern. For a summery look for a porch swing I used Glant's sturdy canvas in Peach Blossom for the seat cushion. I added toss pillows in coordinating hues of coral and watermelon." Webster & Company, Boston Design Center, (617) 261-9660, webstercompany.com



Colors of Summer: The Sun



MEREDITH BOHN
Bar Cart from the Gilded Stag

///
"This custom bar cart wears the sunniest yellow for a fun jolt of color. I love the classic fretwork detail as well as the bamboo-style frame with casters." *Through Meredith Bohn Interior Design*



BESS WALKER
Carnavalet by Fortuny

///
"This cotton print is so appealing because of its depth of color and its timeless design. It would be beautiful sewn up into draperies and soft valances in a library." *Through Bess Walker Interiors*



JILL LITNER KAPLAN
Verellen's Celine Wing Chair

///
"The leather-upholstered wing chair in a snazzy pop of color is the perfect choice to enliven the living room. I like the bright hue and I love the curvy, modern shape." *Hudson, Boston, (617) 292-0900, hudsonboston.com, and Artefact Home/ Garden, Belmont, Mass., (617) 993-3347, artefacthome.com*



Extensive travels in Europe have given **Meredith Bohn** a strong foundation for her classical approach to design that marries contemporary function and innovation with timeless taste, comfort and style. *Meredith Bohn Interior Design, Hollis, N.H., (603) 465-2108, mibinteriordesign.com*

Colors of Summer: Leaves and Grasses



JILL LITNER KAPLAN
Lindow by John Thompson

///
"I am a huge fan of John Thompson's artwork, and this gouache and screen print on Chinese paper truly represents the essence of summer with verdant strokes of green, a wash of yellows and touches of blue. I feel as though I am transported to the edge of a pond." Webster & Company, Boston Design Center, (617) 261-9660, webstercompany.com



Jill Litner Kaplan's interest in art and fashion comes into play as she mixes styles, periods and cultures to create sophisticated spaces that suit her clients' unique personalities. Jill Litner Kaplan Interiors, West Newton, Mass., (617) 558-7751, www.jlkaplan.com



MEREDITH BOHN
Mitchell Gold + Bob Williams Chair

///
"I love the contrast between the fresh green velvet fabric and the design of this thoroughly modern Bauhaus-style chair. Two of them paired with a sofa in a subtle fabric would look wonderful." Boston, (617) 266-0075, mgbshome.com



BESS WALKER
Blair House Palm by Schumacher

///
"This fabric would make lovely draperies for a summery garden room, hung on white wooden rods. Furniture slip-covered in white and accented with toss pillows in this fabric would make for a crisp, fresh look." Boston Design Center, (617) 482-9165, schumacher.com

Colors of Summer: Sea and Sky

BESS WALKER

Caroline Fabric by Blithfield

///

"This study linen with its traditional floral pattern would make a pretty addition to a master bedroom suite. Use nickel nail heads on the furniture to keep the whole look up to date." Lee Jola, FDO Group, Boston Design Center, (617) 428-0370, leejola.com



JILL LITNER KAPLAN
Pedestal Table from Ironies

///

"This stunning pedestal table represents the ocean, with its gorgeous undulating waves that play across the surface and edges of the table. Made out of ice-blue cast resin and sitting atop a stunning base of silver-leaf metal, it is the perfect setting for a summer meal." Studio 534, Boston Design Center, (617) 345-9900, s5boston.com



MEREDITH BOHN
Brazilian Agate Table Lamp

///

"Lately I have been seeing beautiful, fresh blue rendered in a natural form; crystals, geodes and agates are being used in so many ways. This lamp, from Shades of Light, is a favorite of mine." Through Meredith Bohn Interior Design



Bess Walker says listening to the hearts of her clients is as important as listening to their voices when she's seeking inspiration for the custom interiors she's been designing for more than twenty-five years. Walker Interiors, Middletown, P.I., (401) 949-2641, besswalker.com